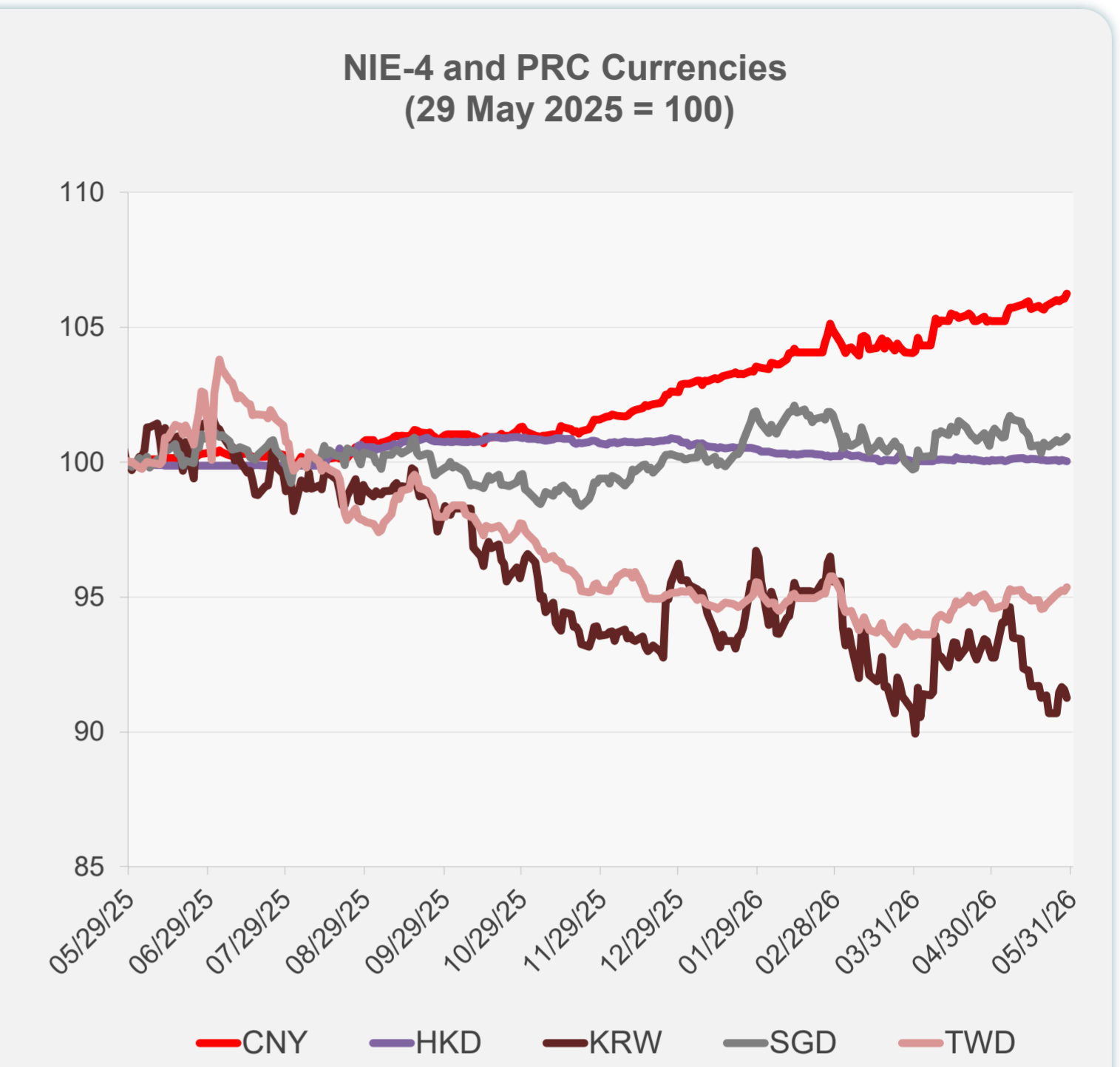
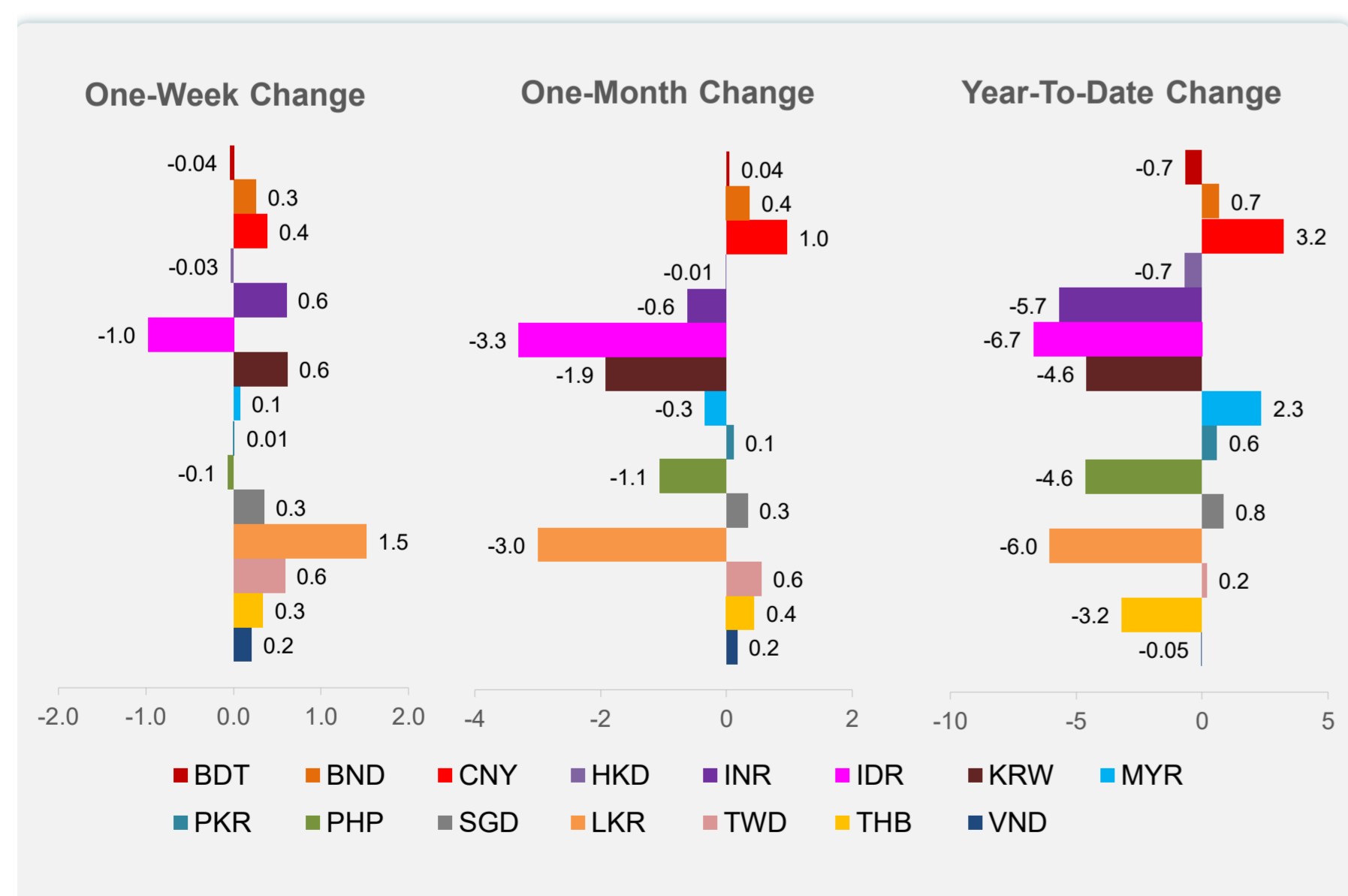
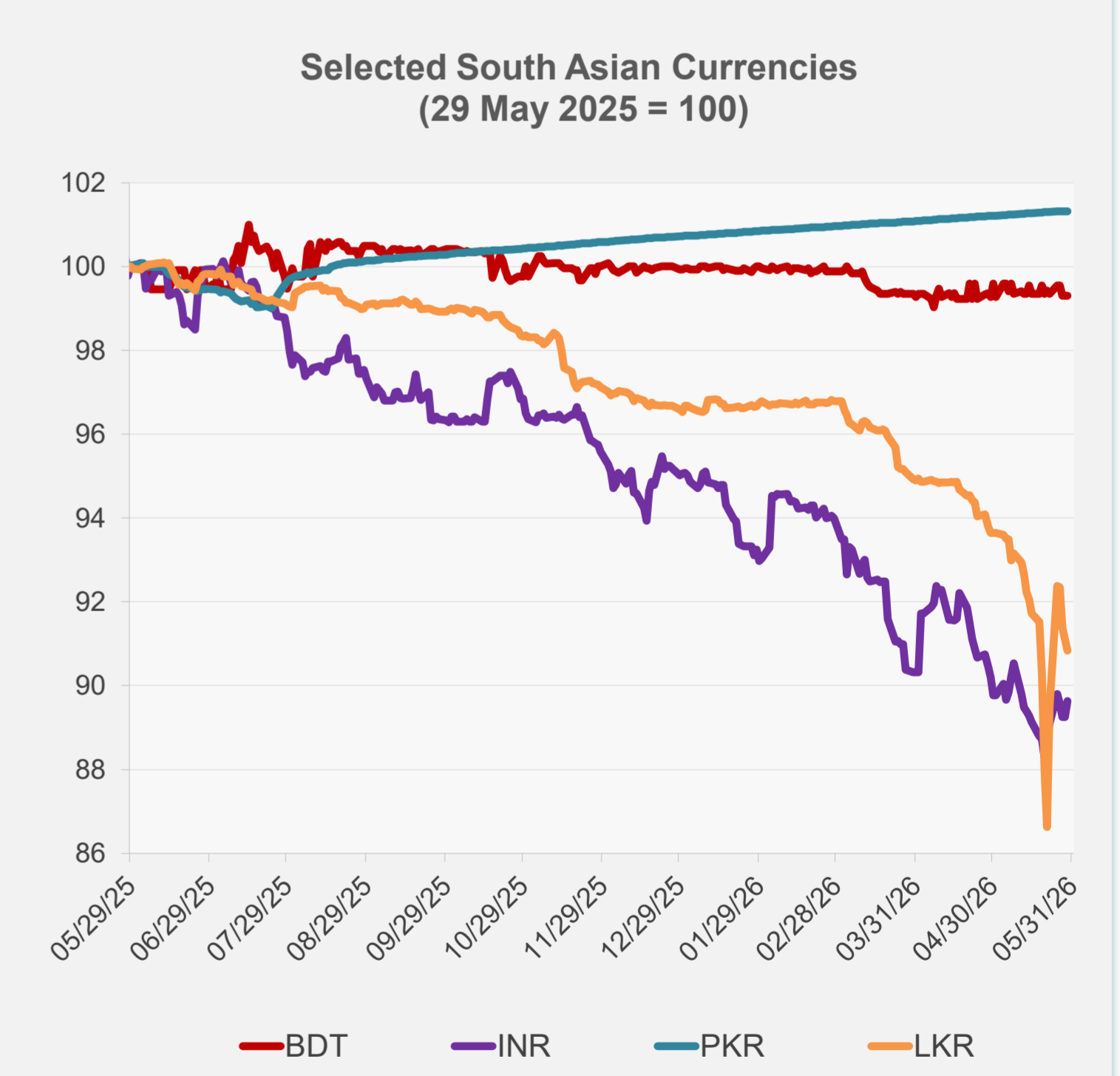
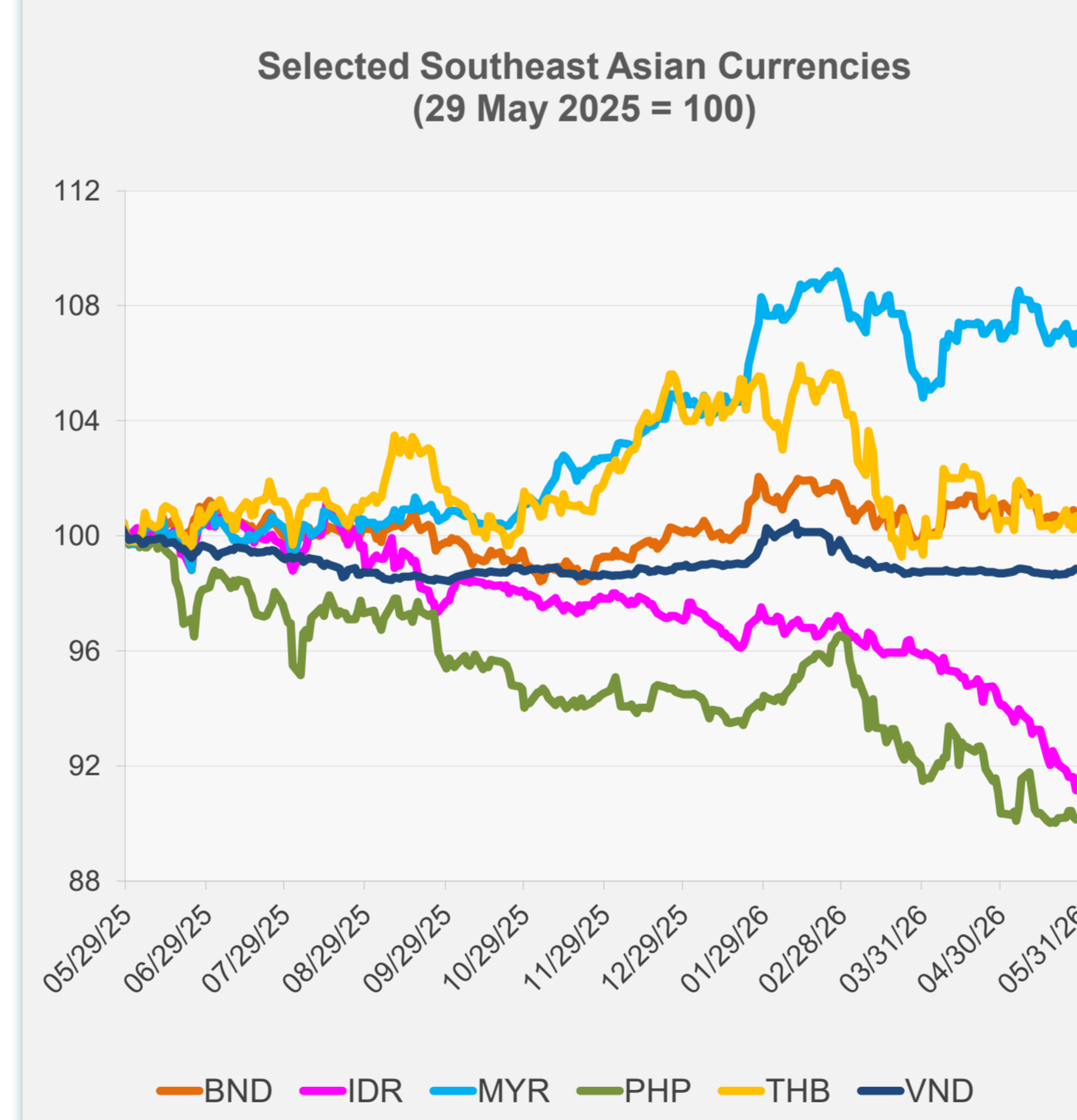


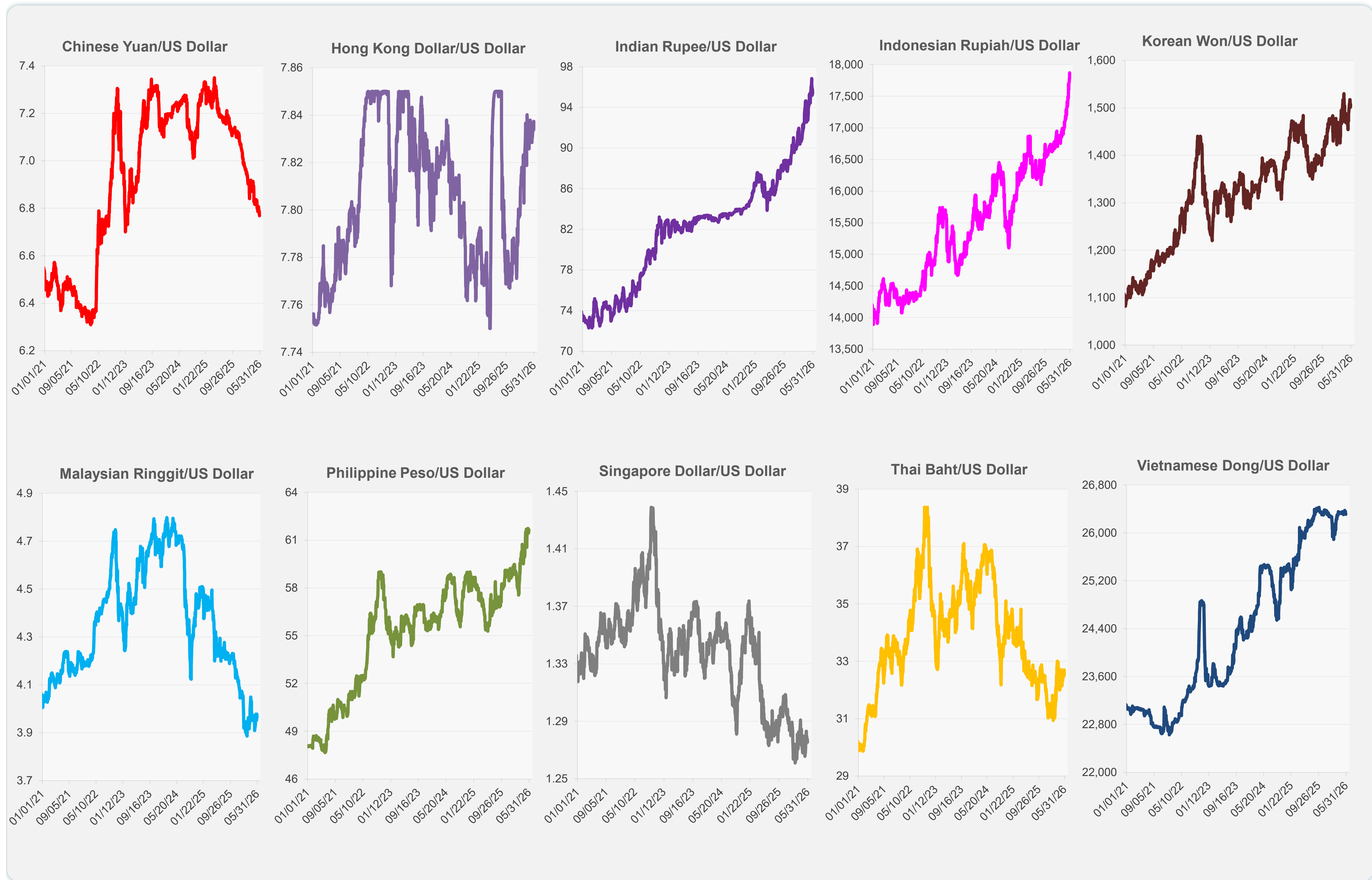
	Latest Closing	% change from Previous Day	% change from 01-Jan-26
Euro	0.86	0.19	-0.64
Japanese yen (JPY)	159.27	0.13	-2.07
Bangladeshi taka (BDT)	123.05	0.00	-0.65
Brunei dollar (BND)	1.28	-0.06	0.66
Chinese yuan (CNY)	6.77	0.17	3.24
Hong Kong dollar (HKD)	7.84	-0.03	-0.69
Indian rupee (INR)	95.38	0.42	-5.67
Indonesian rupiah (IDR)	17,870.00	-0.50	-6.69
Korean won (KRW)	1,507.90	-0.34	-4.57
Malaysian ringgit (MYR)	3.97	0.33	2.35
Pakistan rupee (PKR)	278.47	0.01	0.59
Philippine peso (PHP)	61.65	-0.12	-4.62
Singapore dollar (SGD)	1.28	0.10	0.84
Sri Lanka rupee (LKR)	329.50	-0.31	-6.04
Taipei,China NT dollar (TWD)	31.38	0.14	0.17
Thai baht (THB)	32.55	0.46	-3.20
Vietnamese dong (VND)	26,312.00	0.06	-0.05



NIE = Newly Industrialized Economies



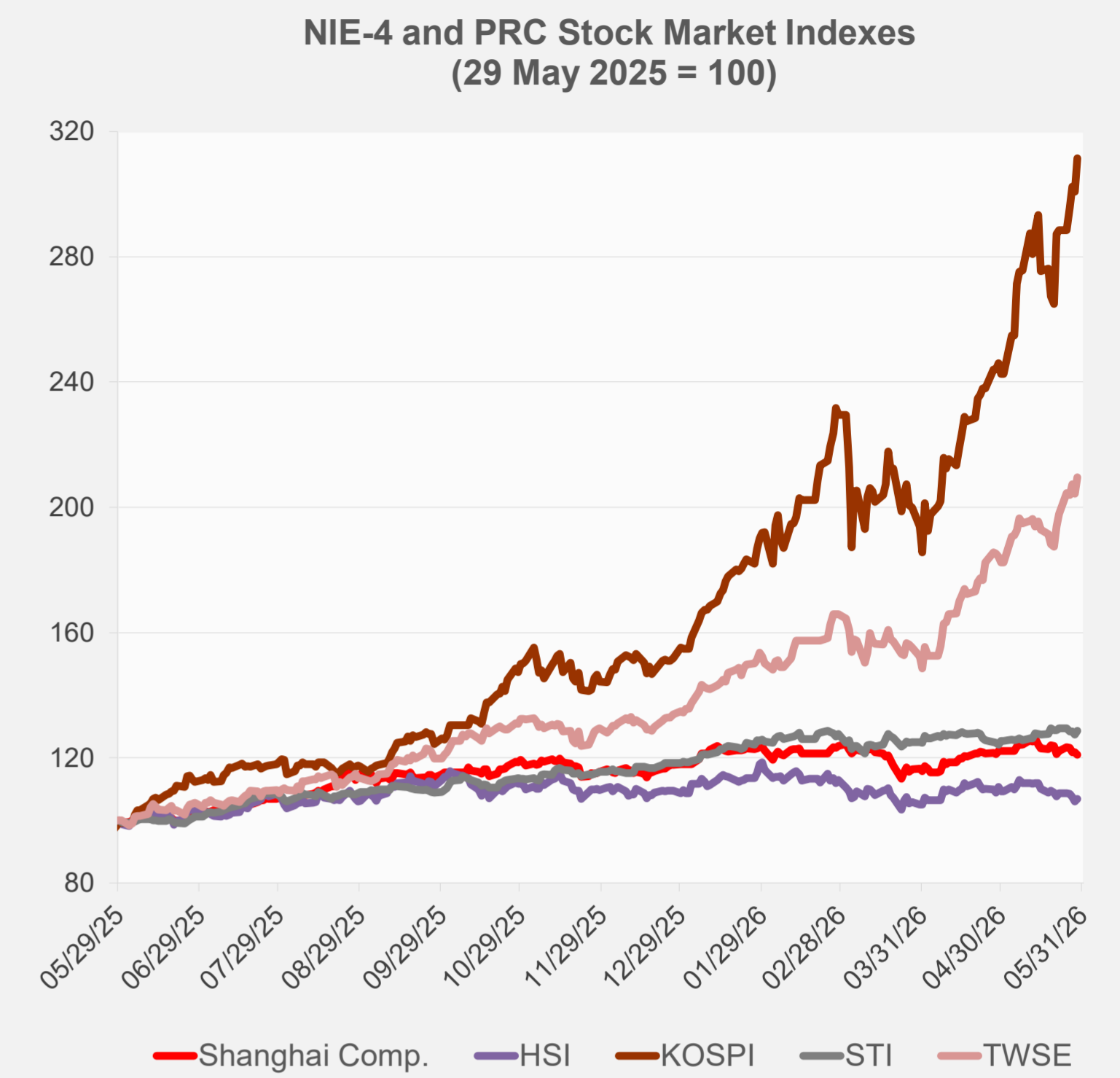
Note: Negative/Decreasing values indicate depreciation of local currency, and positive/increasing values indicate appreciation.  
Source: ADB calculations using data from Bloomberg and Haver Analytics.



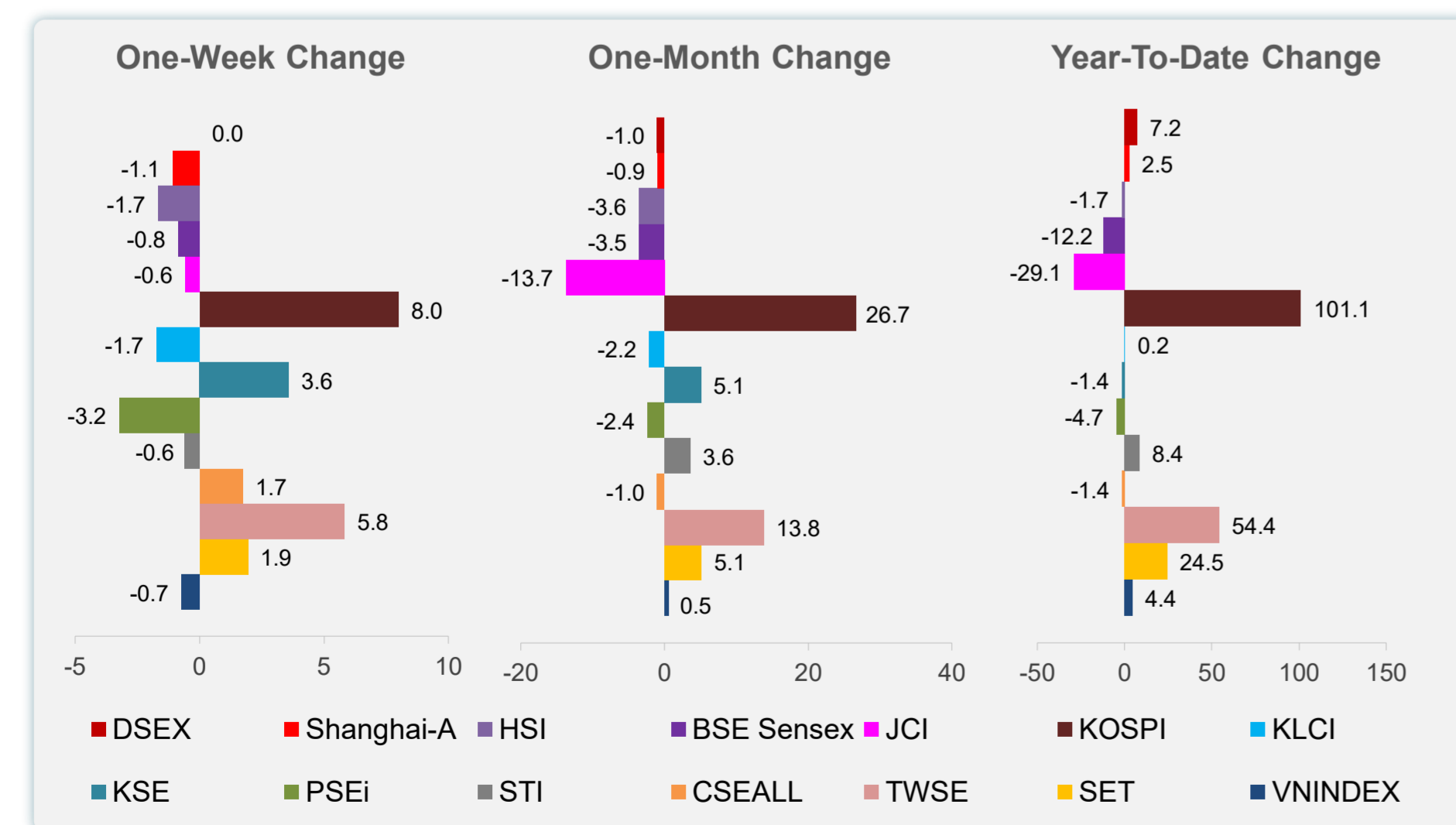
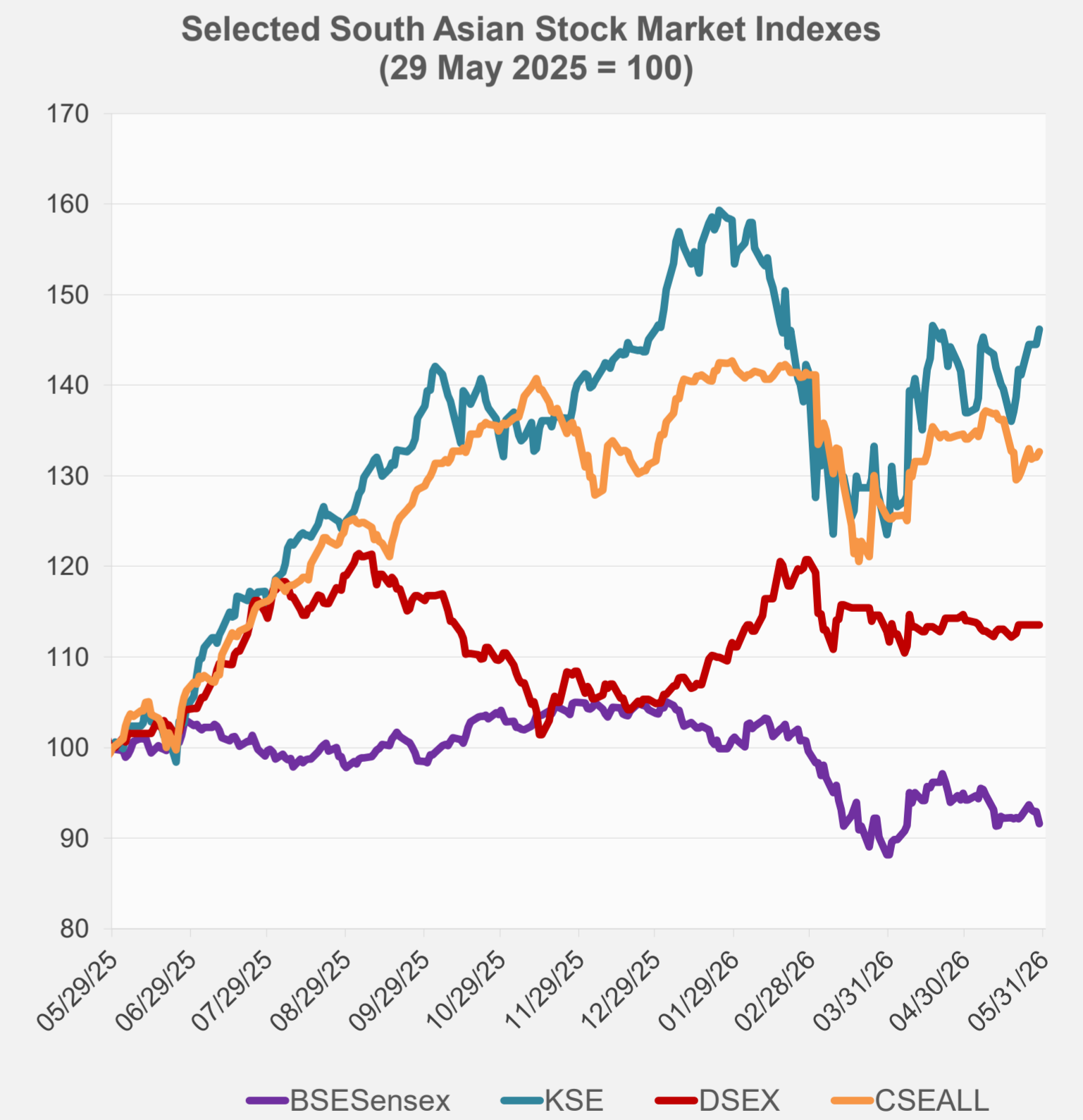
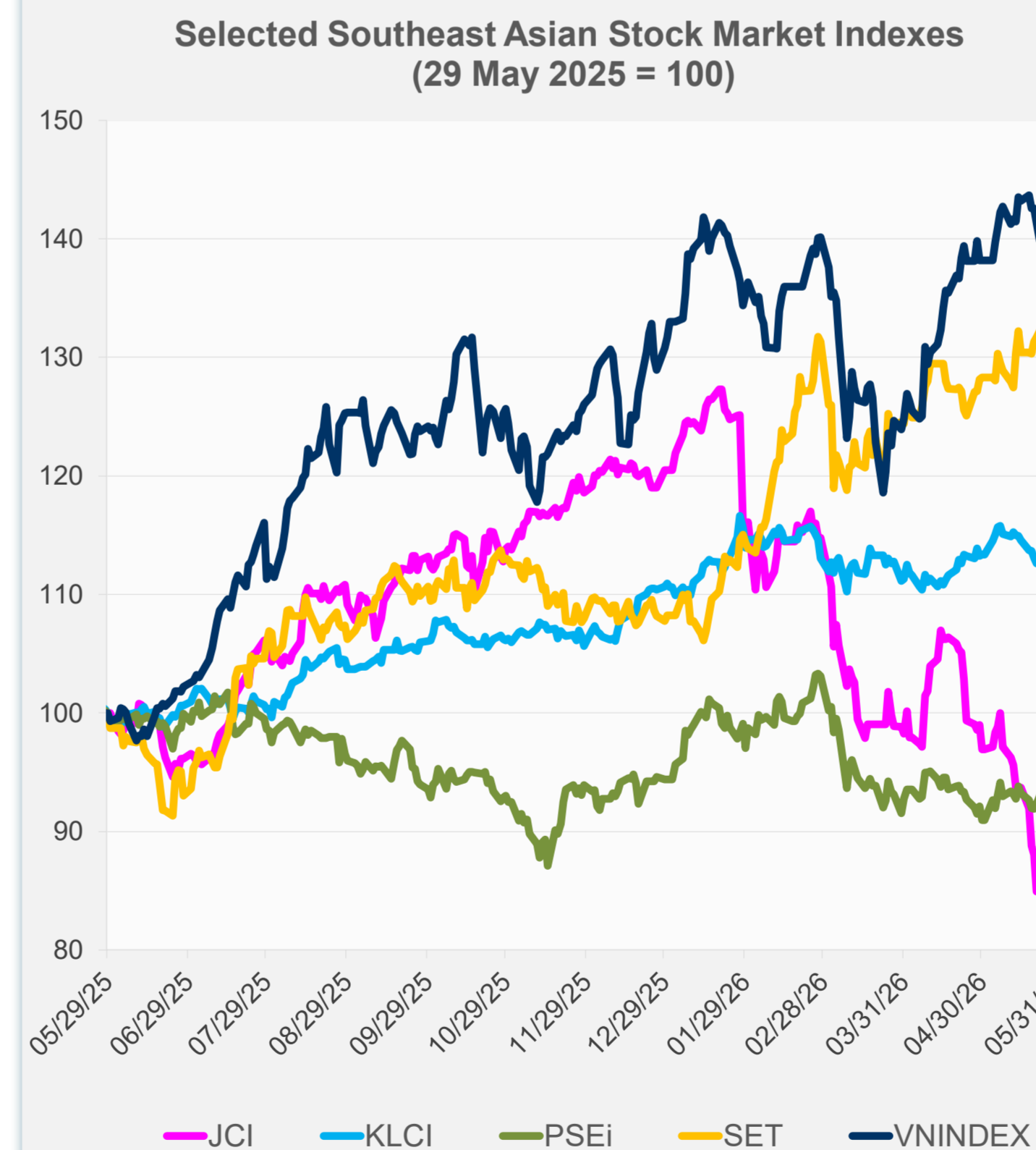
Source: Haver Analytics.

Daily Market Watch  
**STOCK INDEXES**

	Latest Closing	% change from Previous Day	% change from 01-Jan-26
US Dow Jones Ind Avg	51,032.46	0.72	6.18
US NASDAQ	26,972.62	0.20	16.05
US S&P 500	7,580.06	0.22	10.73
UK FTSE 100	13,662.75	0.00	21.32
EURO STOXX 50	6,050.54	-0.08	4.47
Japan NIKKEI 225	66,329.50	2.53	31.76
Bangladesh DSEX	5,264.12	0.00	7.20
PRC Shanghai Comp.	4,068.57	-0.73	2.51
Hong Kong, China HSI	25,182.39	0.70	-1.75
India BSE Sensex	74,775.74	-1.44	-12.22
Indonesia JCI	6,127.38	-0.05	-29.14
Korea, Rep. of KOSPI	8,476.15	3.55	101.13
Malaysia KLCI	1,683.07	-0.11	0.18
Pakistan KSE 100	173,940.60	1.18	-1.44
Philippines PSEi	5,768.76	-1.56	-4.69
Singapore STI	5,037.86	0.98	8.43
Sri Lanka CSEALL	22,310.80	0.50	-1.39
Taipei, China TWSE	44,732.94	2.51	54.45
Thailand SET	1,568.37	-0.04	24.51
Viet Nam VNINDEX	1,863.49	-0.01	4.43



NIE = Newly Industrialized Economies



Sources: ADB calculations using data from Bloomberg and CEIC Data Company.



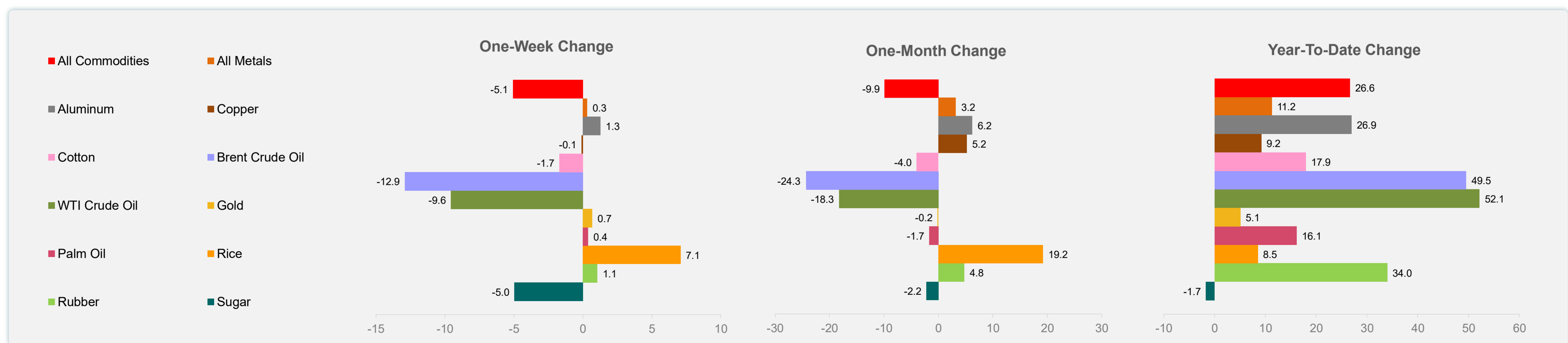
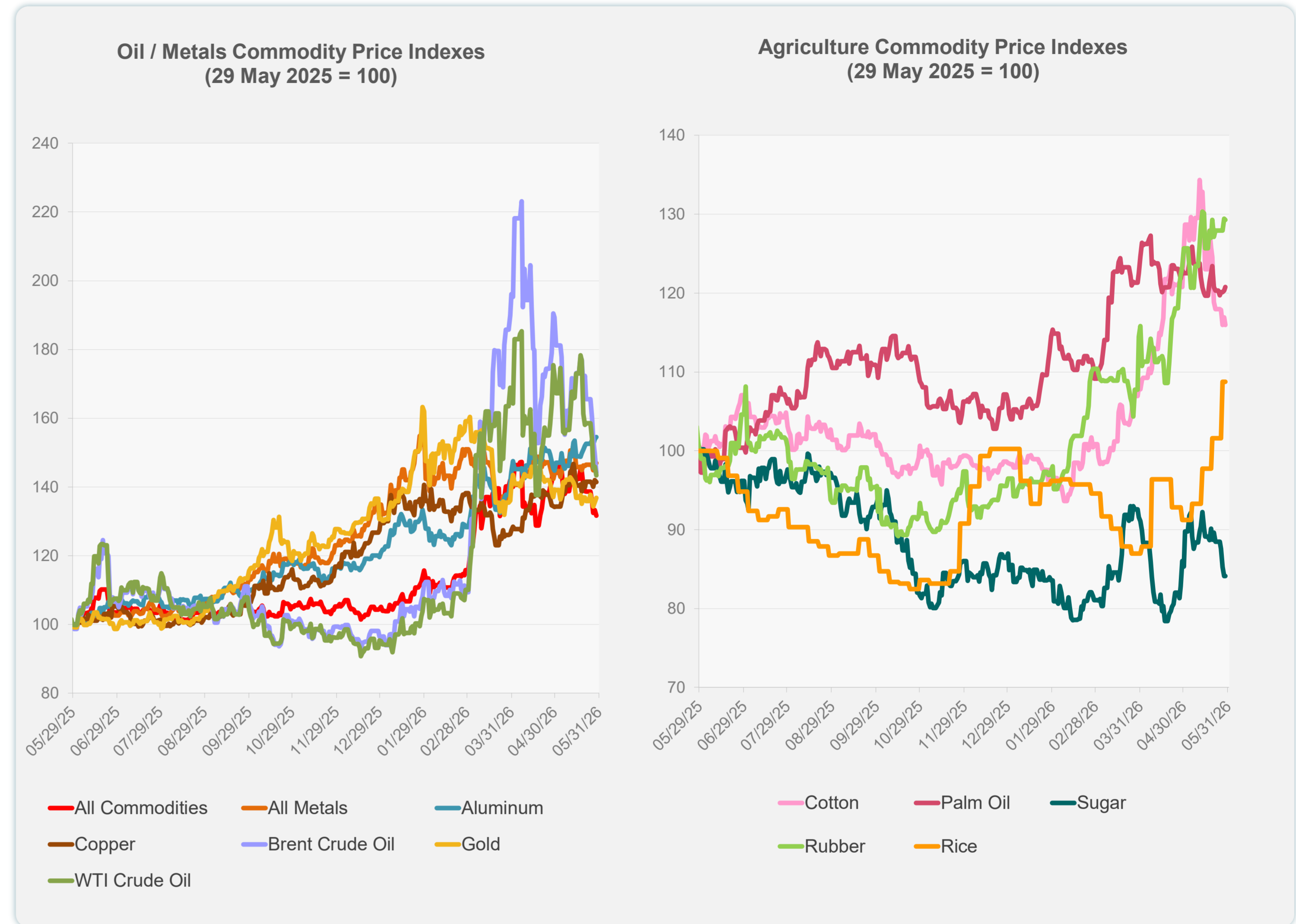
Sources: ADB calculations using data from Bloomberg and CEIC Data Company.

Daily Market Watch  
**COMMODITY PRICES**

	Unit	Latest Closing	% change from Previous Day	% change from 01-Jan-26
S&P All Commodities	US\$	694.57	-1.19	26.63
S&P All Metals	US\$	493.65	0.30	11.24
Aluminum	US\$/metric ton	3,767.68	0.42	26.94
Copper	US\$/metric ton	13,599.71	-0.41	9.20
Cotton	US cents/lb	73.15	-0.84	17.95
Brent Crude Oil	US\$/barrel	93.37	-3.59	49.52
WTI Crude Oil	US\$/barrel	87.36	-1.73	52.14
Gold	US\$/troy oz	4,540.26	1.00	5.11
Palm Oil	US\$/metric tonne	1,124.98	0.37	16.14
Rice <sup>1</sup>	US\$/metric ton	484.00	0.00	8.52
Rubber <sup>2</sup>	US\$/kg	288.00	-0.14	33.95
Sugar	US cents/lb	14.54	0.00	-1.69

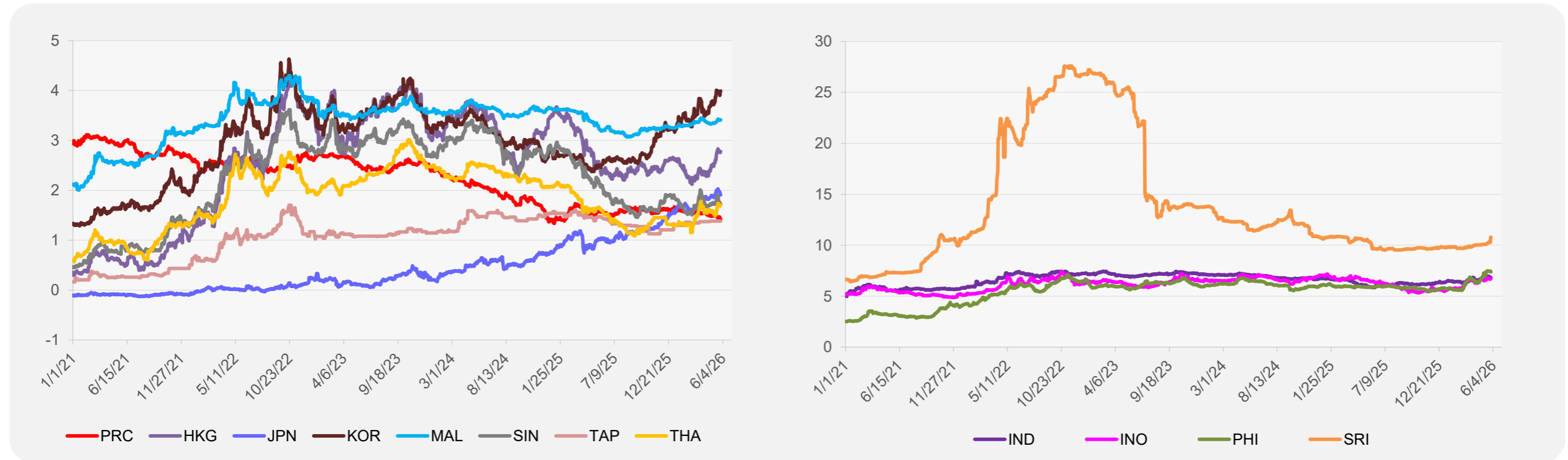
<sup>1</sup> Latest closing price from 27 May 2026.

<sup>2</sup> Singapore Exchange, Ribbed Smoked Sheet Rubber.

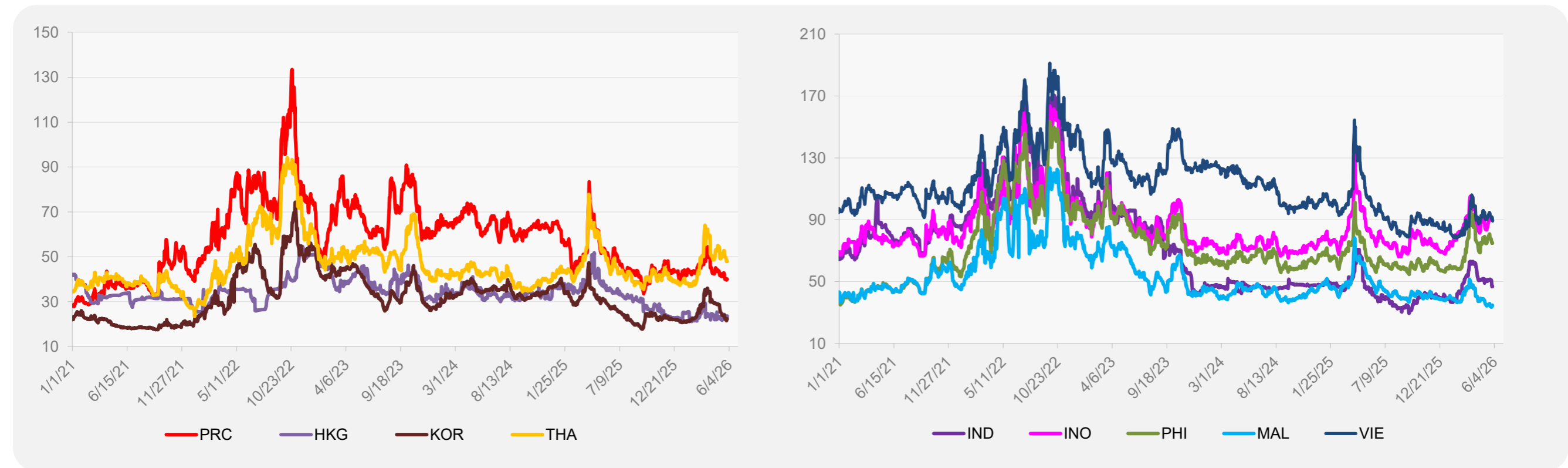


Source: ADB calculations using data from Bloomberg.

### 5-YEAR LOCAL CURRENCY GOVERNMENT BOND YIELDS (%)



### 5-YEAR CREDIT DEFAULT SWAP<sup>1</sup>



<sup>1</sup> In USD and based on sovereign bonds.  
Source: ADB calculations using data from Bloomberg.